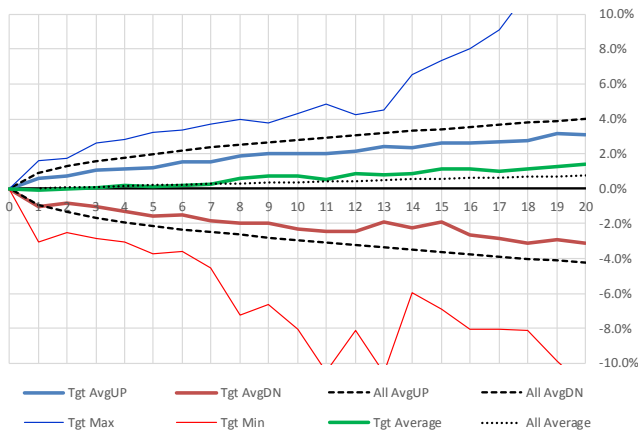


CQ Research - Pattern Recognition Statistical Analysis using CQStarfinder

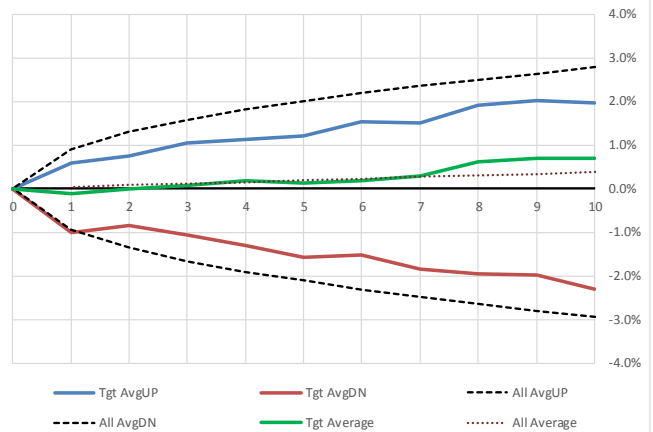
TARGET PRODUCT = **INDU Index** Index Total Pattern Matches = **87** Pattern Significance = **Excellent** Last Close: **09/12/2014**

Days	Tgt AvgUP	Tgt AvgDN	All AvgUP	All AvgDN	Tgt Max	Tgt Min	Tgt Average	Tgt Up	Tgt Dn	Tgt P+	All P+	Tgt P+ > 1.5%	Tgt P- < 1.5%	All P+ > 1.5%	All P- < 1.5%
20	3.1%	-3.1%	4.0%	-4.2%	13.7%	-11.4%	1.4%	63	24	72%	61%	47%	18%	43%	32%
19	3.2%	-2.9%	3.9%	-4.1%	12.8%	-9.9%	1.3%	60	27	69%	60%	54%	16%	43%	32%
18	2.8%	-3.1%	3.8%	-4.0%	11.2%	-8.1%	1.2%	63	24	72%	60%	47%	20%	43%	32%
17	2.7%	-2.9%	3.7%	-3.9%	9.1%	-8.1%	1.0%	61	26	70%	60%	47%	21%	43%	32%
16	2.6%	-2.7%	3.5%	-3.8%	8.0%	-8.0%	1.2%	63	24	72%	60%	49%	16%	42%	32%
15	2.6%	-1.9%	3.4%	-3.6%	7.4%	-6.9%	1.1%	58	29	67%	60%	46%	15%	42%	31%
14	2.4%	-2.2%	3.3%	-3.5%	6.6%	-5.9%	0.8%	58	29	67%	59%	43%	20%	42%	31%
13	2.4%	-1.9%	3.2%	-3.3%	4.5%	-10.6%	0.8%	54	33	62%	59%	43%	17%	41%	31%
12	2.1%	-2.4%	3.0%	-3.2%	4.2%	-8.2%	0.8%	61	24	72%	59%	47%	15%	41%	31%
11	2.0%	-2.4%	2.9%	-3.1%	4.9%	-10.5%	0.6%	59	28	68%	58%	43%	18%	40%	31%
10	2.0%	-2.3%	2.8%	-2.9%	4.3%	-8.1%	0.7%	61	26	70%	58%	47%	21%	40%	31%
9	2.0%	-2.0%	2.6%	-2.9%	3.7%	-6.7%	0.7%	58	29	67%	58%	43%	21%	39%	31%
8	1.9%	-1.9%	2.5%	-2.6%	3.9%	-7.2%	0.6%	58	29	67%	57%	48%	17%	38%	30%
7	1.5%	-1.9%	2.3%	-2.5%	3.7%	-4.5%	0.3%	55	32	63%	57%	37%	20%	37%	30%
6	1.5%	-1.5%	2.2%	-2.3%	3.4%	-3.6%	0.2%	49	38	56%	56%	32%	22%	36%	29%
5	1.2%	-1.6%	2.0%	-2.1%	3.2%	-3.7%	0.1%	53	34	61%	56%	23%	18%	34%	28%
4	1.1%	-1.3%	1.8%	-1.9%	2.8%	-3.0%	0.2%	53	34	61%	56%	13%	13%	32%	27%
3	1.0%	-1.1%	1.6%	-1.7%	2.6%	-2.8%	0.1%	47	40	54%	55%	9%	11%	28%	25%
2	0.8%	-0.8%	1.3%	-1.4%	1.7%	-2.5%	0.0%	45	42	52%	54%	2%	10%	23%	22%
1	0.6%	-1.0%	0.9%	-0.9%	1.6%	-3.1%	-0.1%	49	38	56%	53%	2%	8%	14%	15%
0	0%	0%	0%	0%	0%	0%	0%			50%	50%				

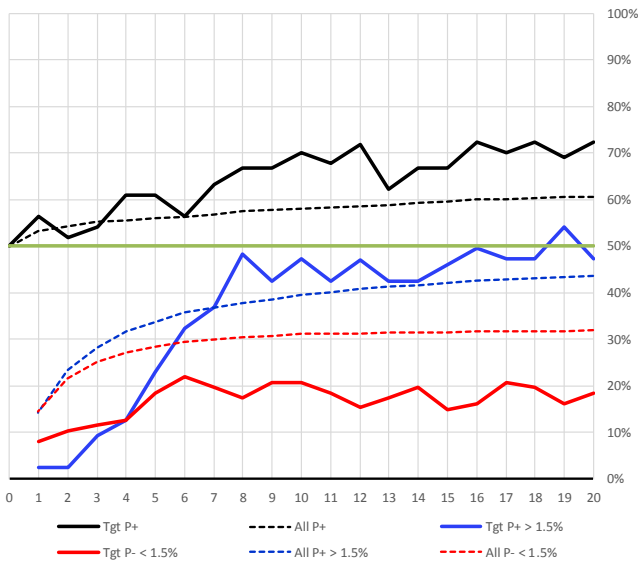
Forecast Price Distribution Vs. Market Expected



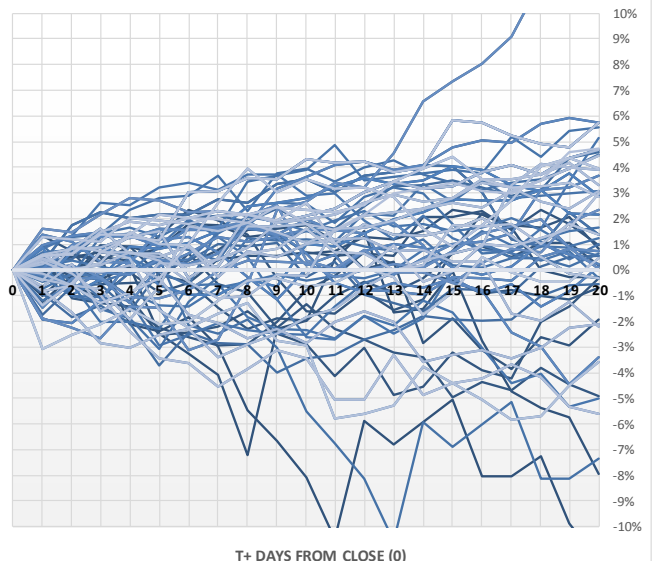
Forecast Price Distribution Vs. Market Expected



Forecast Price Delta Probability Vs. Market Expected



Forecast Price Distributions (All matching observations)



KEY: Tgt = Target product currently being defined: **INDU Index** P+ / P- = Probability of price closing higher / Lower
 All = Entire population of all historical price patterns P+ > XYZ % = Probability of price closing > stated % change
 Matching Observations = All historical price patterns that meet the required parameters to qualify as a pattern match to the current Target defined pattern
 Market Expected = Outcomes using entire database population as defined by CQStarfinder algorithms

Disclaimer: The information displayed above is a mathematical output derived from patterns of historical data that match our proprietary pattern definitions. Although probabilities and price distributions are displayed, they SHOULD NOT be interpreted as a buy or sell recommendation for those products.