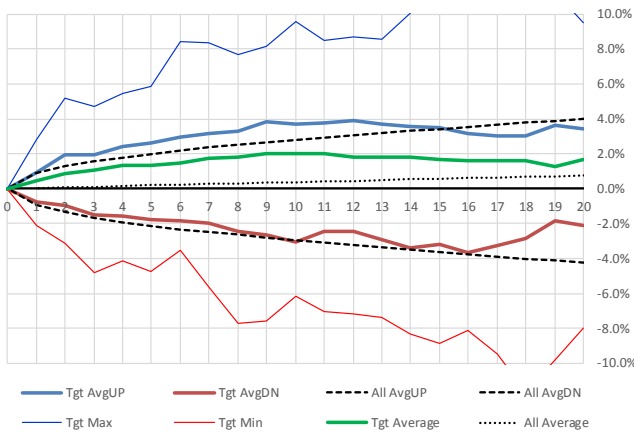


CQ Research - Pattern Recognition Statistical Analysis using CQStarfinder

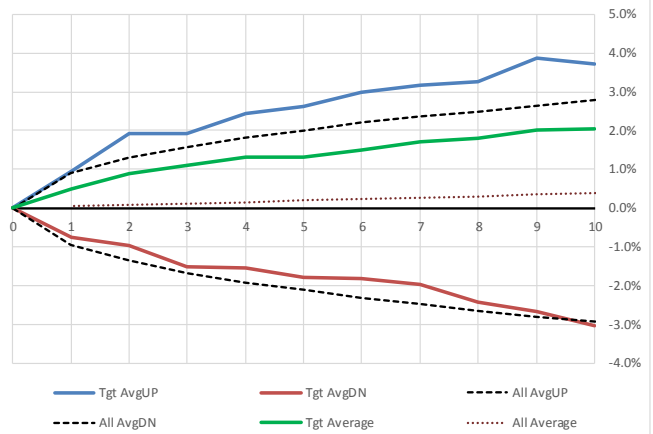
TARGET PRODUCT = **DAX Index** Index Total Pattern Matches = **88** Pattern Significance = **Good** Last Close: **09/12/2014**

Days	Tgt AvgUP	Tgt AvgDN	All AvgUP	All AvgDN	Tgt Max	Tgt Min	Tgt Average	Tgt Up	Tgt Dn	Tgt P+	All P+	Tgt P+ > 1.5%	Tgt P- < 1.5%	All P+ > 1.5%	All P- < 1.5%
20	3.5%	-2.1%	4.0%	-4.2%	9.5%	-8.0%	1.7%	60	28	68%	61%	51%	16%	43%	32%
19	3.7%	-1.8%	3.9%	-4.1%	11.3%	-9.8%	1.3%	50	38	57%	60%	43%	16%	43%	32%
18	3.0%	-2.9%	3.8%	-4.0%	13.0%	-11.6%	1.6%	67	21	76%	60%	44%	13%	43%	32%
17	3.0%	-3.3%	3.7%	-3.9%	13.3%	-9.5%	1.6%	68	20	77%	60%	47%	17%	43%	32%
16	3.1%	-3.7%	3.5%	-3.8%	11.1%	-8.1%	1.6%	68	20	77%	60%	55%	19%	42%	32%
15	3.5%	-3.2%	3.4%	-3.6%	11.9%	-8.9%	1.7%	64	24	73%	60%	64%	19%	42%	31%
14	3.6%	-3.4%	3.3%	-3.5%	10.1%	-8.3%	1.8%	66	22	75%	59%	59%	18%	42%	31%
13	3.7%	-2.9%	3.2%	-3.3%	8.6%	-7.4%	1.8%	63	25	72%	59%	61%	19%	41%	31%
12	3.9%	-2.4%	3.0%	-3.2%	8.7%	-7.2%	1.8%	59	29	67%	59%	57%	19%	41%	31%
11	3.7%	-2.4%	2.9%	-3.1%	8.5%	-7.0%	2.0%	63	25	72%	58%	59%	16%	40%	31%
10	3.7%	-3.0%	2.8%	-2.9%	9.6%	-6.2%	2.0%	66	22	75%	58%	58%	18%	40%	31%
9	3.9%	-2.7%	2.6%	-2.9%	8.1%	-7.6%	2.0%	63	25	72%	58%	59%	17%	39%	31%
8	3.3%	-2.4%	2.5%	-2.6%	7.7%	-7.7%	1.8%	65	23	74%	57%	55%	15%	38%	30%
7	3.2%	-2.0%	2.3%	-2.5%	8.4%	-5.6%	1.7%	63	25	72%	57%	57%	17%	37%	30%
6	3.0%	-1.8%	2.2%	-2.3%	8.5%	-3.5%	1.5%	61	27	69%	56%	52%	13%	36%	29%
5	2.6%	-1.8%	2.0%	-2.1%	5.9%	-4.7%	1.3%	62	26	70%	56%	53%	18%	34%	28%
4	2.4%	-1.5%	1.8%	-1.9%	5.4%	-4.1%	1.3%	63	25	72%	56%	49%	16%	32%	27%
3	1.9%	-1.5%	1.6%	-1.7%	4.7%	-4.8%	1.1%	67	21	76%	55%	44%	7%	28%	25%
2	1.9%	-1.0%	1.3%	-1.4%	5.2%	-3.1%	0.9%	56	32	64%	54%	36%	8%	23%	22%
1	1.0%	-0.7%	0.9%	-0.9%	2.8%	-2.1%	0.5%	63	25	72%	53%	17%	6%	14%	15%
0	0%	0%	0%	0%	0%	0%	0%			50%	50%				

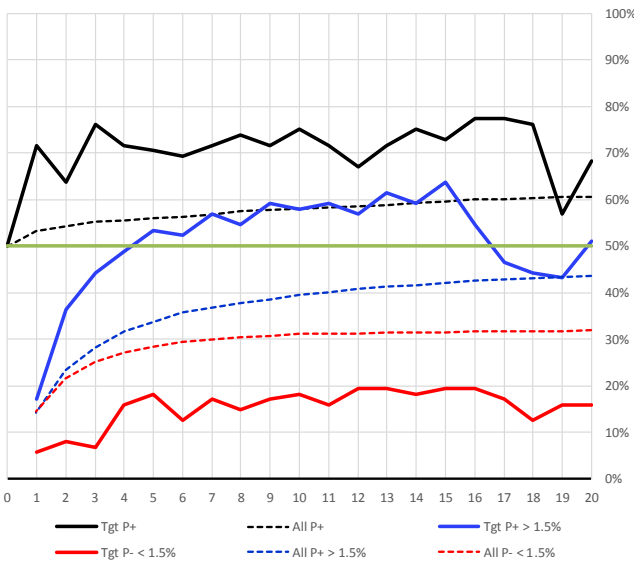
Forecast Price Distribution Vs. Market Expected



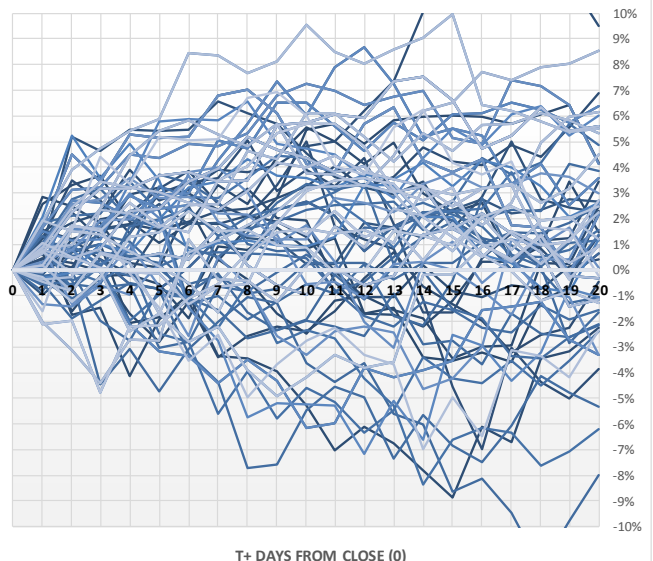
Forecast Price Distribution Vs. Market Expected



Forecast Price Delta Probability Vs. Market Expected



Forecast Price Distributions (All matching observations)



KEY: Tgt = Target product currently being defined: **DAX Index** P+ / P- = Probability of price closing higher / Lower
 All = Entire population of all historical price patterns P+ > XYZ % = Probability of price closing > stated % change
 Matching Observations = All historical price patterns that meet the required parameters to qualify as a pattern match to the current Target defined pattern
 Market Expected = Outcomes using entire database population as defined by CQStarfinder algorithms

Disclaimer: The information displayed above is a mathematical output derived from patterns of historical data that match our proprietary pattern definitions. Although probabilities and price distributions are displayed, they SHOULD NOT be interpreted as a buy or sell recommendation for those products.